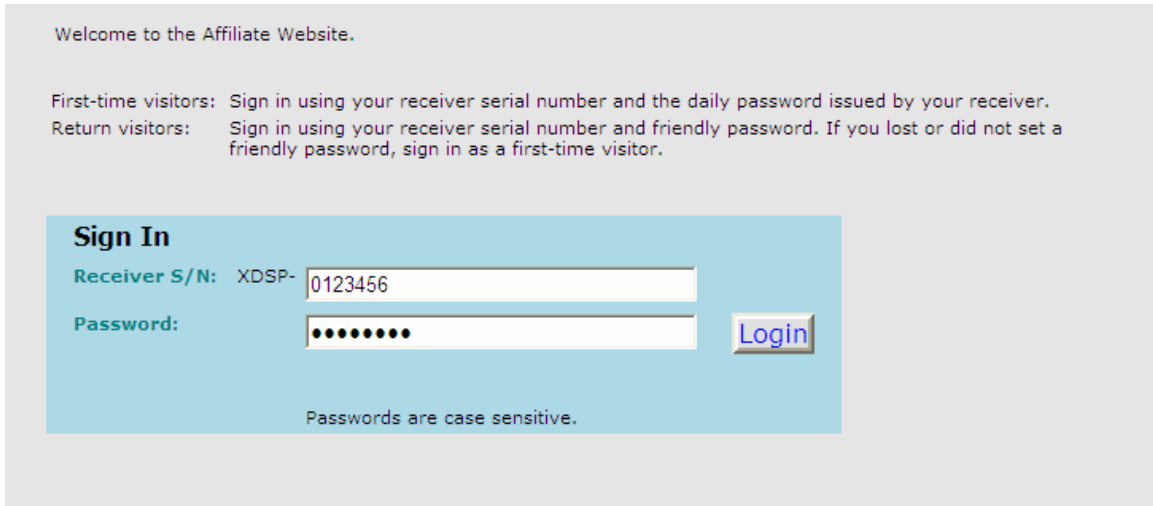


The following tutorial will explain how to schedule the bottom-of-hour Fox 5 Minute report to coincide with long-form programming.

1. Access <http://myxdsreceiver.premiereradio.com> and input your serial number and password, both of which may be accessed from the front panel of the receiver itself.*



Welcome to the Affiliate Website.

First-time visitors: Sign in using your receiver serial number and the daily password issued by your receiver.
Return visitors: Sign in using your receiver serial number and friendly password. If you lost or did not set a friendly password, sign in as a first-time visitor.

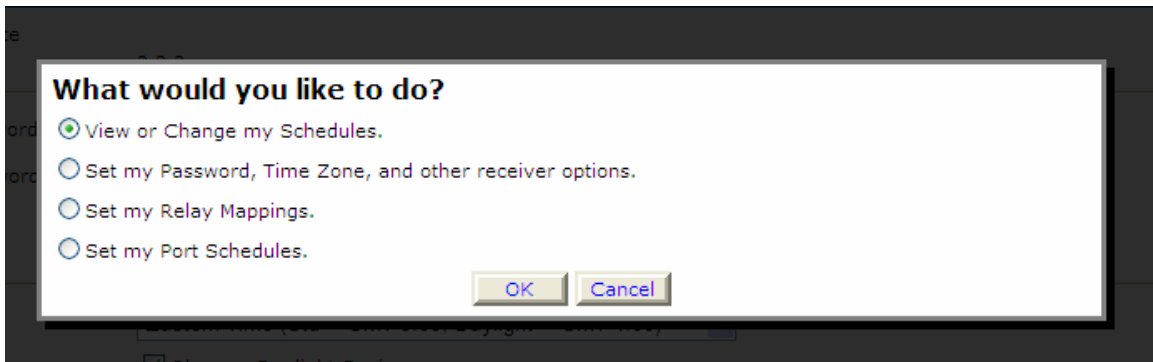
Sign In

Receiver S/N: XDSP-

Password:

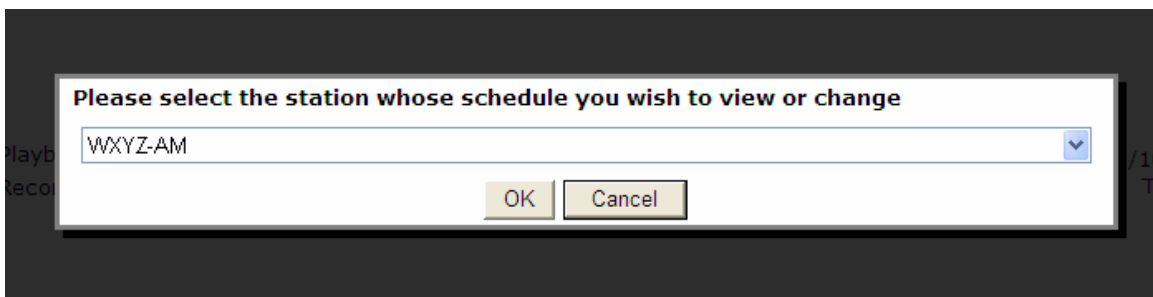
Passwords are case sensitive.

2. After entering your sign-in information, you will be prompted to choose the action you wish to perform. Select “View or Change my Schedules.” You will be presented with a list of stations assigned to your receiver. Choose the station on which you carry the Fox 5 Minute report.



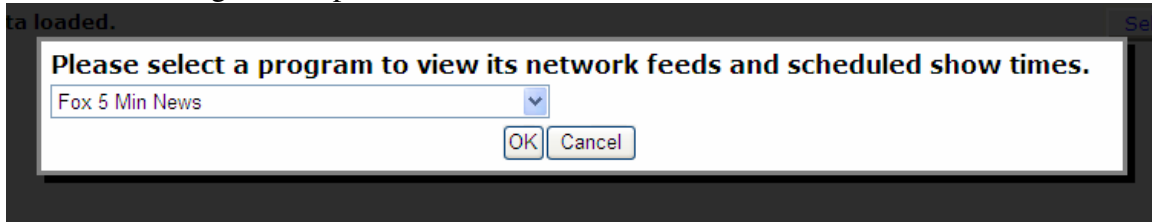
What would you like to do?

- View or Change my Schedules.
- Set my Password, Time Zone, and other receiver options.
- Set my Relay Mappings.
- Set my Port Schedules.

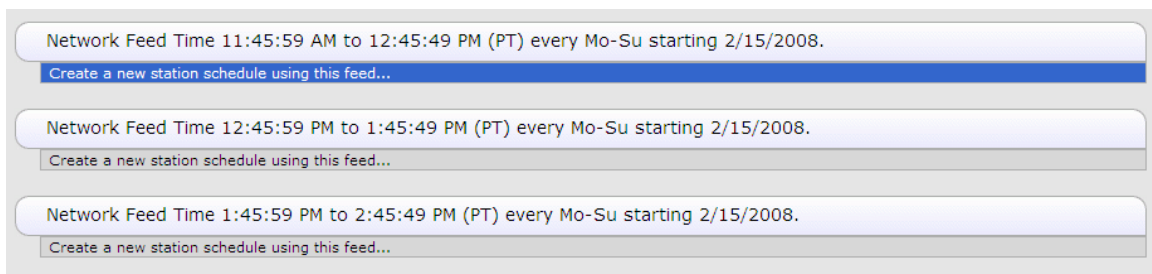


Please select the station whose schedule you wish to view or change

3. A calendar view of your programming schedule should now be visible. Click on the “Program List” tab at the upper left corner of the screen. You will see the following list of options:



4. After selecting “Fox 5 Min News,” you will see a list of programming hours available for scheduling. Every hour must be scheduled, but for the purposes of this tutorial select an hour during which a long-form talk program is -or will be- scheduled, by clicking “Create a new station schedule...” Please note that the listed network feed time goes (for example) from 11:45 to 12:45. This means that, if you want to schedule the bottom-hour report for 12:30, you must schedule the 11:45 block.



5. From the “Edit Schedule” screen, unclick the “Use Complete Feed” button and edit the Local Air Start to 12:30:30 and the Local Air End to 12:31:29. Next, click “Add.” If you have already scheduled the long-form program, a message will appear alerting you of scheduling overlap, asking you to prioritize. Drag “Fox 5 Minute” to the top of the list and click “Ok.”

Schedule 'Fox 5 Min News' on ZJAS-FM

Network Feed Time 11:45:59 AM to 12:45:49 PM (PT) every Mo-Su starting 2/15/2008.

What would you like to do with this program?

- Broadcast the program **live** at the time of the Network Feed.
- Broadcast the program **delayed** by automatically capturing the program and then broadcasting it at a Local Air Time of my choice.
- Capture the program (**record**) to a file to manually play it back later using M&C command or Opto.

Set which Local Air Times to broadcast from the live network feed.

Local Air Start
Local Air End Use Complete Feed

Network Feed starts at 11:45:59 AM and ends at 12:45:49 PM (PT).

Invalid schedule: the entered broadcast times have a longer duration than the network feed.

Check the network feed days to use for this schedule.

Monday Tuesday Wednesday Thursday Friday Saturday Sunday

Set the Date Range of the network feeds to use for this schedule.

Start Date
End Date Open-ended

Network Feed starts on 2/15/2008

Prioritize Overlapping Schedules

The new schedule will overlap with one or more existing schedules.

How should these schedules be prioritized?

Drag and Drop to Prioritize

highest	Fox 5 Min News (Live): @ 12:30:30 PM to 12:31:29 PM (PT) every Mo-Su starting 11/24/2008. *
lowest	The Sean Hannity Program (Live): @ 12:06 PM to 12:58:40 PM (PT) every Mo-Fr starting 8/5/2008.

* the newly created schedule

Network Feed Time 11:45:59 AM to 12:45:49 PM (PT) every Mo-Su starting 2/15/2008.

Live Broadcast: Local Air Time 12:30:30 PM to 12:31:29 PM (PT) every Mo-Su starting 11/24/2008. [edit](#) [delete](#)

Create a new station schedule using this feed...

Network Feed Time 12:45:59 PM to 1:45:49 PM (PT) every Mo-Su starting 2/15/2008.

Create a new station schedule using this feed...

Network Feed Time 1:45:59 PM to 2:45:49 PM (PT) every Mo-Su starting 2/15/2008.

Create a new station schedule using this feed...

6. You will now be at the Network Feeds list. Repeat steps 4 and 5 as necessary for each hour needed. If you have already scheduled the long-form program, you are finished, if not, follow the next steps.
7. Click on the “Select New Program” button on the top right of the Network Feeds list and, when prompted, select the program you will be scheduling.

Network Feeds of Fox 5 Min News on ZJAS-FM [Select New Program](#)

Network Feed Time 12:45:59 AM to 1:45:49 AM (PT) every Mo-Su starting 5/28/2008.

Create a new station schedule using this feed...

8. Schedule the program as normal. After each hour, you will see a menu asking you to prioritize your schedule. Drag the long-form program to the bottom of the list and click “OK.”

*Retrieving the serial number and password from your receiver is done by pressing “Set,” then scrolling to the SETUP option and pressing “Set” again. Here you will see the serial number and a PWD at the bottom right of the screen. Press “3” to retrieve the password.